

# Notes on using Cottage, Auto-camping Site

## 1. Check-in / check-out time (please be punctual)

- Day tip : Check-in at 11:00 / Check-out at 16:00
- Lodging ; Check-in at 15:00 / Check-out at 10:00

\* If you arrive early, then you will have to spend your time in the Park and check in at the check-in time. (If you check out early, please inform us in advance.)

\* If you check in after 17 o'clock, please come to the “Administration Building”

## 2. General information

- For guests staying at Cottage of Log House

In principle, tableware, bedding and other equipment must not be moved to other facilities. (If you are forced to move them, please be sure to return them to their original buildings.)

- At check-out, please make sure to clean, tidy up, and taking out garbage out of the cottage you used.
- **Please make sure to return the rental goods to us**
- If you damage or stain tableware, fixtures, rental goods, etc. , please report to us. (Depending on the condition, we may charge you the actual cost.)
- Please cover the bed (including the bed mattress) with sheets for next visitors' uses. (Please note that we may charge you the actual expense, if the beds were stained)
- At the campground, two adjacent sites will share one electric outlet. Please use it with care each other.
- The maximum electric capacity that can be used at the campground outlet is 1000 W (10 A). (Please refrain from using more than 1000w electricity in total.)

■ Reminders for using the facilities; Please be careful about using bunk beds and lofts (for falling from high places etc.). We are not responsible for any injuries caused by your careless uses.

## 3. Manners and prohibited matters

- You can accompany your pets only on authorized sites.(Please sign ” Agreement for Accompanying Pets”. )
- Please be careful not to disturb other customers due to noise such as moving cars or playing music. (Especially please be careful not to disturb them due to your conversation, music, car movement, noise, etc. after 7:00 pm)
- Using fireworks, bonfires, generators and karaoke is prohibited.
- Pitching tents and barbecuing outside except the designated areas are prohibited.
- The entrance gate will be closed at around 18:00 for a security reason. If you have anything to do beyond the time, please contact the night-shift staff as shown below.

437-25 Daio Nakamura, Otoyo-cho, Nagaoka-gun, Kochi Prefecture

Yutorisuto Park Otoyo

(Phone (day): 0887-72-0700, (Night) : 0887-72-0726)

## Notes on accompanying dogs

Please observe the following rules so that all our valuable customers can use our facilities comfortably. (Please sign the separate written document, “The Agreement Accompanying Pets”.)

(General rules in the Park)

1. The accompanying dogs are registered under public health centers.
2. The accompanying dogs has been vaccinated within one year.
3. The accompanying dogs do not catch contagious diseases.
4. The accompanying dogs are not in estrus.
5. Make sure the accompanying dogs do not bark unnecessarily.
6. **Don't leave the accompanying dogs unattended.**
7. You have to take care of pet excrement responsibly.
8. The accompanying dogs are not allowed to enter the 1st and 2nd floors on the main building as well as other customers' dining spaces.



\* You can let your dogs enter the Glass House if they are wearing a manner pad. (Manner

pads, etc. are sold at the shop of the main building.)

9. Please do not let your dogs to make other customers and their pets feel scary.

10. Please keep the accompanying dogs leashed in the park, and follow the general manner and rules.

(Rules for using Lodges (Cottage / Log House))

11. Please use pet toilet mats, etc. inside the lodges, and refrain from letting pets to excrete at other areas.

12. Pets are not allowed to bite or scratch buildings or other facilities.

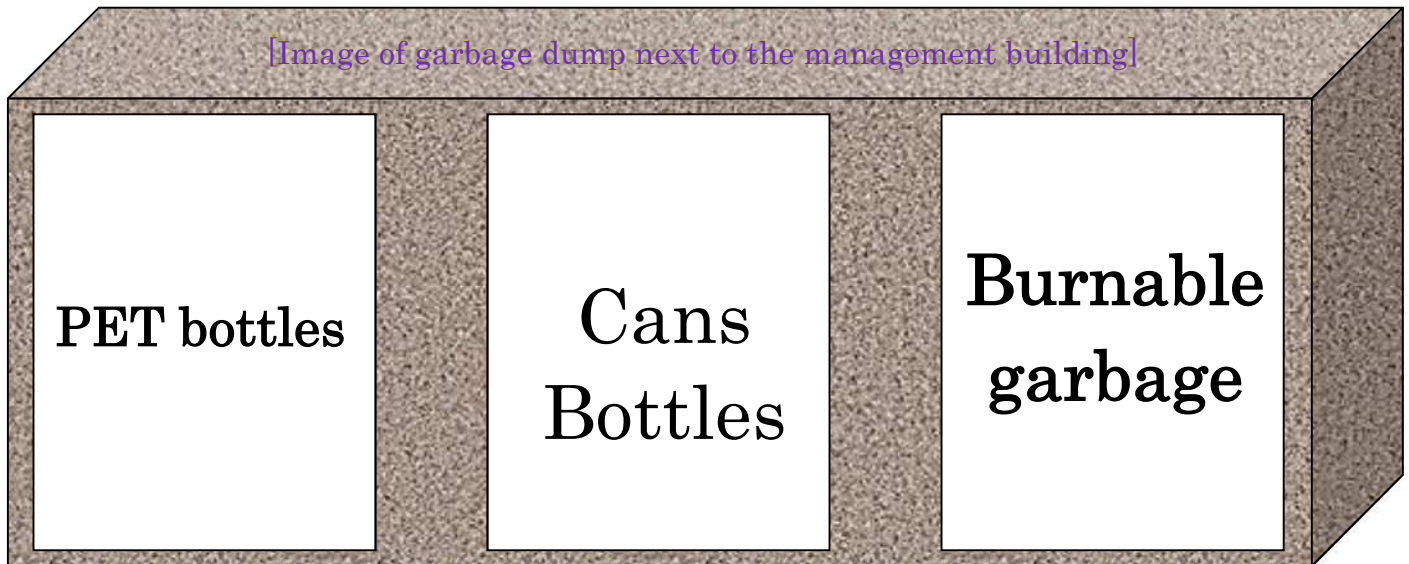
13. Pets are not allowed to use the beds at Cottage and Log Houses.

Please be aware beforehand that you will be charged for the actual expenses for any stains or dirt on the facilities or equipment, or any other damages to the facilities or equipment in the park or cottages which are caused by your pets.

In addition, please make sure that if you did not cooperate with the above rule, we may refuse to take your order next time. Your understanding this policy is highly appreciated.

## Request for separating garbage (four types)

※ If you cannot separate the garbage, please bring back the garbage with you



Remove cap and label  
Other plastics should  
be put in the burning  
garbage bag.

Separate cans and bottles  
in each bag after cleaning  
them.

Do not put PET bottles,  
bottles, cans and  
incombustibles in the bag

### ■ Separating garbage completely

- ① "Burnable garbage": Please separate burnable garbage as "Burnable Garbage". However, do not mix them with PET bottles, cans and other non-combustible materials.
- ② "Can"; Rinse them lightly and separate them as "Can".  
"Bottle": Rinse the bottle lightly, remove the plastic cap from the mouth of the bottle and separate them as "Bottle".
- ③ "PET bottle"; Remove the caps and the labels from the PET bottles. Separate them as "PET Bottle" and put the caps and labels in another plastic bags.

\* Please take home incombustibles with you other than those described above. (We cannot accept wire nets, gas cylinders, camping equipment, etc. as garbage)

# Cottage Campground Map



After 17 o'clock, the park's main phone (0887-72-0700) will not be accessible.  
So please contact 0887-72-0726 (dial extension number 10)

**When you do not meet any staff members upon checking out and returning room key, please put the key in the Administration Building's Post and leave.**